

This drawing is a representation of architectural and structural concepts only.
Keylight, Inc. and its employees take no responsibility and hereby disclaims liability for the creation, engineering, or use of any components or systems in this or any other document and shall not otherwise be liable for any loss or injury caused by or arising from, in whole or in part, any failure, installation, or modification or construction with these drawings. In no event shall Keylight, Inc. or its employees be liable for any damages, including any profits arising from this project, or otherwise as a result of the services provided on this project for any reason or if Keylight, Inc. has been made aware of the possibility of such. It is the responsibility of all vendors, companies and the venue to enter into design, properly engineered and approved materials, components and methods, including but not limited to local building, fire and safety codes, and all applicable OSHA standards. Any person or company, in a condition of using these drawings, specifically agrees to hold Keylight, Inc. and its employees harmless against any and all liabilities resulting from use of the drawings provided.
Review or use of this document implies acceptance of the above terms and conditions.

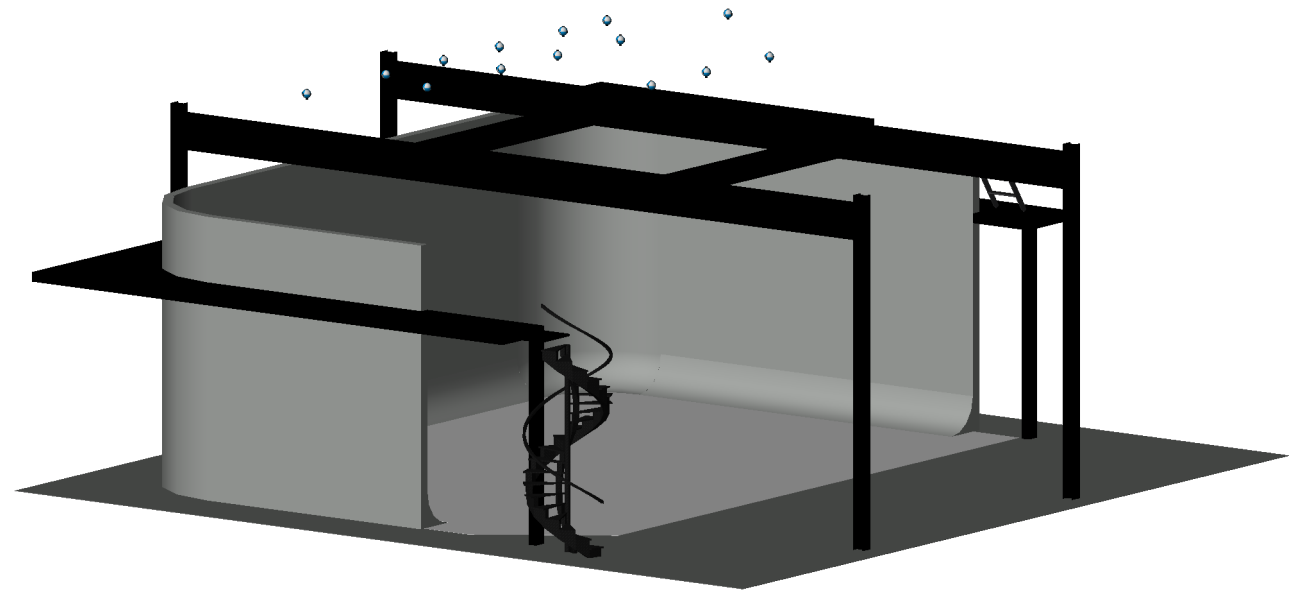
Project	Venue Plans
Drawing Title	11x17 - Plan and Elevations
Venue	Essanay Studios
Location	Studio 2
Drawing Date	8/5/2020
Designed by	Christopher Wren
Drawn by	Christopher Wren

KEY

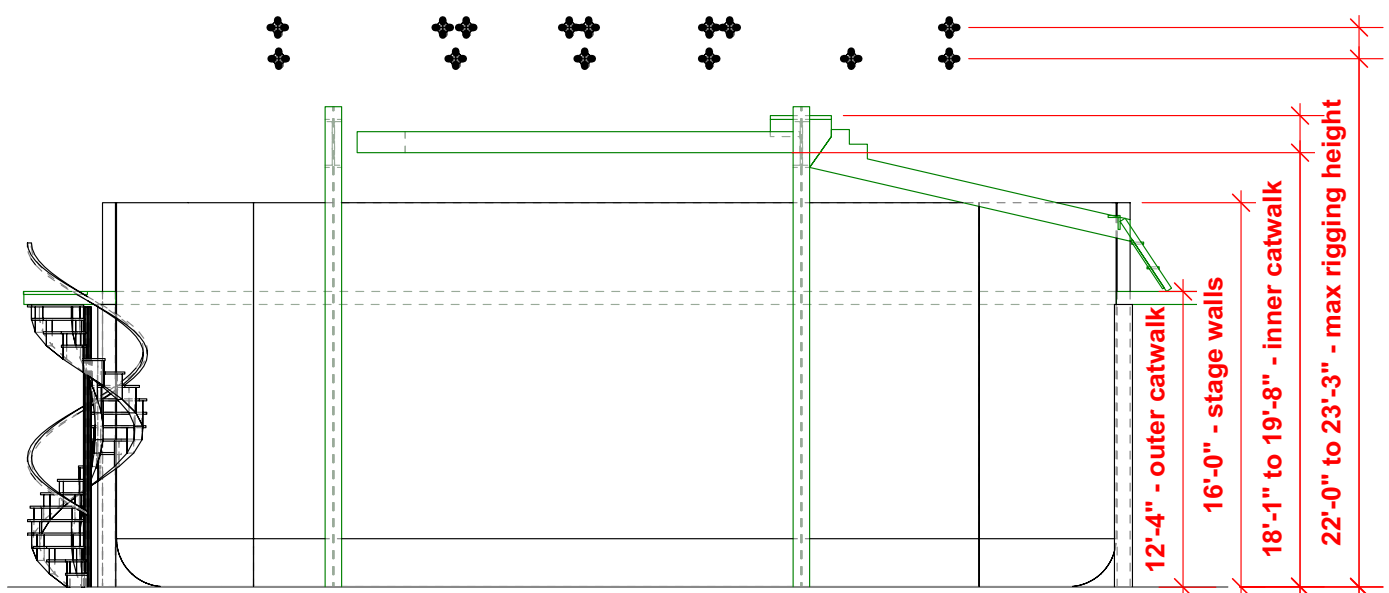
- 100A Circuit
- 6cx Soca
- Rigging Point

ESSANAY
STUDIO AND LIGHTING COMPANY, INC.
1346 N. NORTH BRANCH ST. CHICAGO, IL 60642 (312) 664-4400 FAX: (312) 664-4450

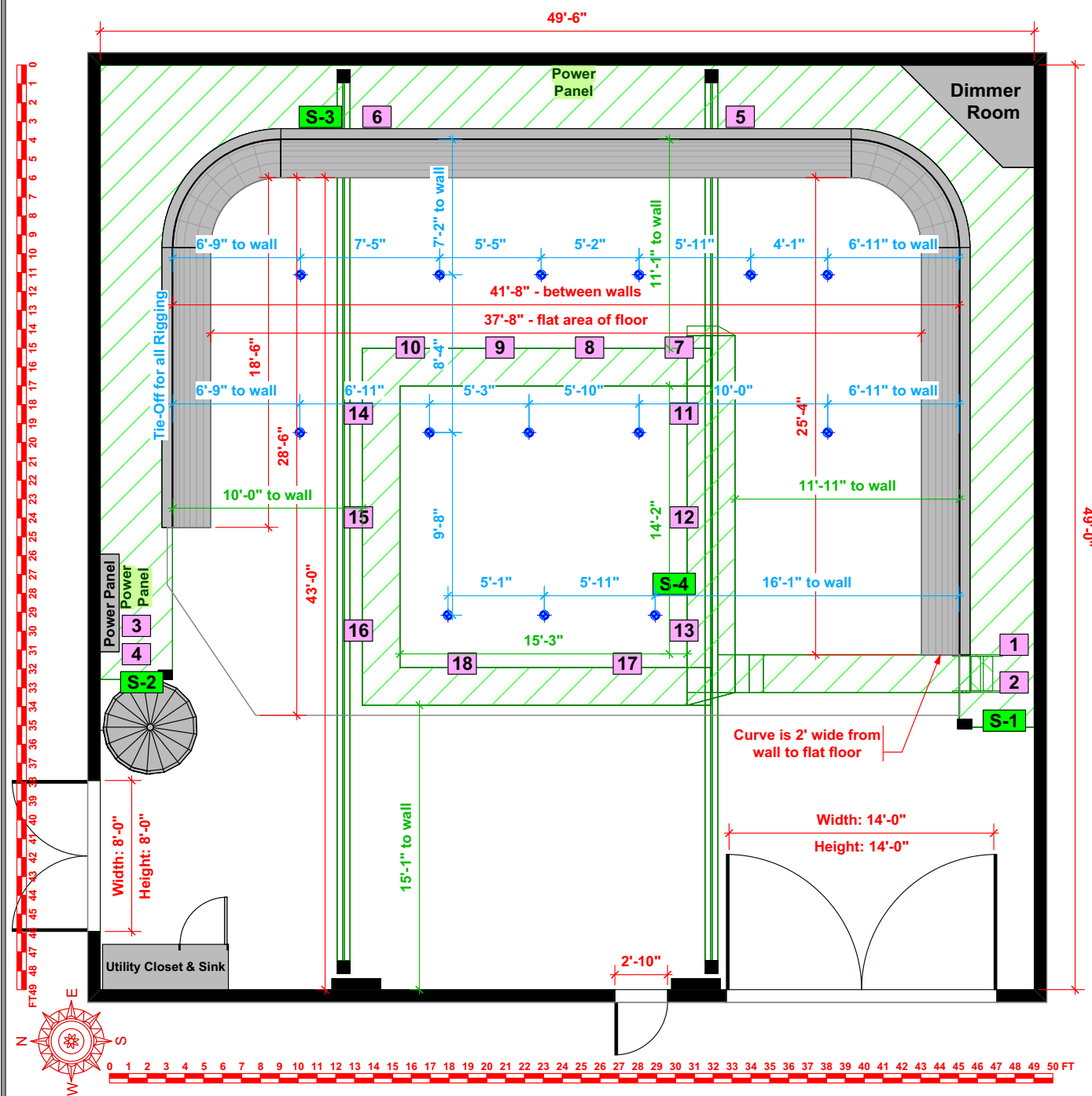
Plate Number:



3 Iso View - Studio 2
Scale: 1/8" = 1'



2 East Elevation - Studio 2
Scale: 1/8" = 1'



1 Plan View - Studio 2
Scale: 1/8" = 1'